



WINTER 2025 NEWSLETTER

Letter from the Acting President, K. Terry Jackson, Jr.



LHA, like many similar organizations (churches, etc.) can only function well because of volunteers. As I am writing this, we are about a week away from Thanksgiving. One thing I am thankful for is the volunteers I work with on several activities. Specifically for this newsletter--I am very grateful for our LHA board and committee members! They are a fabulous group that are very interested in our lake and helping with things lake-related. We need more volunteers. Please consider joining us. To that end, I'd like to welcome our newest board members, Bill Fogerty and Terry Kemmy. I thank them for stepping up.

In November we had our 'back-up' Annual Meeting. Our 'regular' Annual Meeting needed to be rescheduled because of Hurricane Helene. It is worth noting that, despite the threat of the storm, the Corps was still committed to sending their team up from Savannah for the original meeting. Our back-up meeting had much less speakers and content as there wasn't time to get everything realigned before the end of this year. BUT, we still had it and had excellent discussion with those that came. AND be watching for notice of next year's Annual Meeting. Next year we will meet on March 11 instead of our fall meeting date. We will have several important items for the membership to be aware of and vote on as well as the speakers we had lined up for a month ago. So please be watching for this in future correspondence.

Included with the many things on our to-do list, your Board is working on some initiatives to increase both membership and membership engagement. Please be watching over the next few months for these as well. As I started this note, we've got a great group of committees and the Board. My goal is to have more initiatives and actions from this group to report on in future newsletters. Please join us!

I wish you and yours a very Merry Christmas and Happy New Year!



*Photo courtesy of local Anderson Artisan,
Painter & Photographer Alison Mays*

HELP GROW LHA!

If you're receiving this newsletter, you already know all about LHA, and our commitment to the lake. Everything we do is to ensure that Lake Hartwell remains the jewel of the Upstate and receives the care and attention it deserves.

But what about your neighbors? We, the volunteers that manage the day to day activities of LHA, acknowledge that our members are our best membership recruiters. You already appreciate what we do and can share those details with other like-minded stakeholders.

Please do your part and share your newsletters with one of your neighbors. Encourage them to tear off the membership form on the last page or log on to our web site and join you and over a thousand others who do what we do together, **For the Sake of the Lake.**

WHY JOIN LHA?

- Learn and keep up to date on all things "Lake Hartwell".
- Keeps you current on any shoreline modifications and development that might affect your property or the lake environment.
- Adds your voice to LHA's relationship with the Corps of Engineers as well as county and state governments.
- Ensures Lake Hartwell will be kept clean, remain as full as possible and continue to be a safe place to enjoy.
- Allows you to take an active part in the future care and development of the Lake.

www.lakehartwellassociation.org



BOARD OF DIRECTORS

K. Terry Jackson, Jr.,
Acting President

Open
Vice President/Shoreline Development

Jill O'Connor, Secretary

Kyle Els, Treasurer

Ray Fedele, Past President

Kira Novak, Volunteer Programs

Rhea Dignam, Legislative

Angela Kemp, Publications & Media

Katie Tillman,
Membership & Awareness SC

William Fogerty,
Membership & Awareness GA

Margarit Gray, Environmental

1-864-224-LAKE(5253)

"We Make Lake Living Easy"
JS
SHORELINE

FLOATAIR Boatlifts • Cart Paths • Dock Work
Dredging • Erosion Control • Steps • Underbrushing

706-377-4891 www.jandsshoreline.com
markjohnsonwjandsshoreline.com

BuyHartwellLake
llc



1-855-BUY-LAKE

www.BuyHartwellLake.com



"Exceeding Expectations!"

40 YEARS OF TRUSTED MARINE CONSTRUCTION
ALUMINUM OR STEEL I-BEAM CONSTRUCTION

864-225-2393 / 1-800-706-7397
www.customdocksystems.com

HURRICANE HELENE CLEAN UP

By Katie Tillman

After several inquiries to various rangers regarding hurricane clean-up, we thought it might be useful to let you know what we have been told. If you have trees down on the Corp of Engineers COE land adjacent to you, you may go ahead and clean up the storm damage. Trees may be cut up and removed or burned as necessary. If you choose to burn, it must be done in an area close to the water where there are no other flammable items. One ranger suggested you document the damage done by the storm and what you did to remedy. Just some simple before and after pics will do.

Once the trunks and branches have been dealt with, the stumps must NOT be removed. Stumps must be set back upright in their original location. The reason for this is to try and prevent as much erosion as possible. As we all know, the planting plan for COE property requires a tree every 18' on center. If you are not in compliance because of the storm, a planting plan may be discussed with you at a later date.

We hope this helps! Remember with this, or any question that may arise about COE property and how we interact with it, do not hesitate to reach out with an email or a call. The rangers are all more than happy to help. The number you call before you burn is 800-777-3473. This is the forestry commission. You will speak to a dispatcher, and they will help you.



TRASH TANK



Lake Hartwell Partners for Clean Water (LHPCW) hosted a Ribbon Cutting Ceremony on August 28th for what they have fondly named the 'Trash Tank'. The Trash Tank is a modified pontoon that will be available for picking up collected and organized trash around the lake. Lake Hartwell Association (LHA) is a proud monetary sponsor of this Trash Tank. Many of the organizations present at the ribbon cutting included Anderson County and City officials, Chamber of Commerce, LHA, LHPCW, Clemson Extension Service, US Army Corps of Engineers, and South Carolina State Parks.

Of special mention are David Strickland of Captain Dave's/Strickland Marina as the first and major donor to the Trash Tank, and John O'Keeffe from Yamaha Marine that donated the engine for this 1st Trash Tank and made a commitment for an engine towards a possible 2nd Trash Tank.

A special note and moment of silence was offered for Dyke Spencer, LHA Board Member and LHPCW President. Dyke was a significant supporter of the Trash Tank and recently passed with his memorial service just five days before the Ribbon Cutting. Lake Hartwell Association is glad to be a part of this project and looking forward to the difference it will make on our lake.



RIVERS WHITMIRE
Realtor®

864.752.5545
rivers.whitmire@allentate.com



Leading REAL ESTATE
COMPANIES
OF THE WORLD®

**FOWLER
ELECTRIC
SYSTEMS**

FOWLERELECTRICSYSTEMS.COM
864.934.5813



2404 Highway 29 North
P.O. Box 13565
Anderson, SC 29624
P 864.225.4639
F 864.224.3964

oldstonetractor.com 



(864) 467-1806
boatlifts-floatair.com
support@bestboatlift.com

REACHING OUT FOR VOLUNTEERS

Each year the Lake Hartwell Association undertakes numerous projects throughout South Carolina and Georgia. As this year's Volunteer Services Coordinator I would like to create a volunteer bank. I am in the process of compiling an email group to use to reach out to individuals when needs arise. This is not a commitment to any specific task or event. Sending your contact information to me and maybe a list of what you would like to participate in or services you can offer would be the first step.

There is something for everyone. Maybe you want to assist with the Annual meeting, help with the Splash the Trash event, prefer community outreach, lend a hand in our boater safety classes, or maybe some behind the scenes tasks. We all have our special skills and I would be thrilled to have you on board! I look forward to hearing from you!!!

Thanks in advance,

Kira Novack

adoptashoreline@lakehartwellassociation.org

LHA SPONSORS ANOTHER SUCCESSFUL SPLASH THE TRASH EVENT

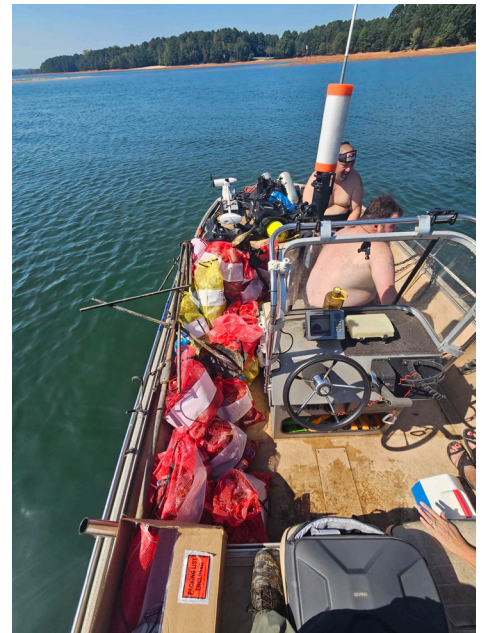
A huge thank you to all who participated in this Fall's event. The value of your service is priceless! Also, a big shout out to the "behind the scenes" Clean Team which consisted of Ray Felton, Anaston Porter, Jill Chapman, Linda Stummborg, myself, and our co-sponsor Lake Hartwell Partner's for Clean Water. Although mother nature didn't cooperate with the original Saturday, September 14th date, the clean up event was deemed an overall success! Moving the date may have affected volunteer participation but the Clean Team still managed to staff, supply and assist efforts at 15 sites in South Carolina and Georgia combined. This included several USACE landings, three state parks, two privately organized communities, several county ramps and one local marina. We were able to organize community volunteers, lake



property owners, students, county agencies, and local businesses to successfully remove 2,645 pounds of trash. Through these combined efforts we can continue to maintain Lake Hartwell's 962 miles of shoreline.

In addition to land clean up, on Sunday we expanded our dive team participants and included the underwater areas around Apple Island, also commonly referred to as SC Party Island. Ten divers, organized by Amy Haynes, participated this year and collected 450 pounds of trash from down below. The majority of trash consisted of beer and seltzer cans, several boat anchors, a ladder, umbrella stands, sun glasses, phones and a few grill pieces. Another shout out to Steve Stumberg and Gerritt Beatty who volunteered their captain services and pontoons to transport both divers and supplies.





Ray Felton also did the “dirty work” by using his boat to haul all the trash to the ramp. Gerritt Beatty, a long time LHA member, also volunteered his time on Saturday to clean up the shore line of Apple Island and collected over 30 bags of trash. He was a busy man both on land and water. It is a massive undertaking to keep the lake clean but joining forces in creative ways allows for further expansion of this program.

Moving forward in 2025, please keep a lookout for our Fall clean up date. We will once again welcome community input on how and where to stage cleanup sites. Please pick a site, organize a group and we’ll help with supplies and assist anyway needed. Organizing a more concentrated effort on individual island trash clean up and pick up will be a goal of this group for future events. Island Sweepers will be needed, are you one of them?

Finally, at any time throughout the year I am willing to organize mini cleanups. If an individual, family, school, group, neighborhood association, business, church, or community organization would like to volunteer to organize an event, please contact me anytime to start the process at adoptashoreline@lakehartwellassociation.com. Supplies, assistance and trash disposal services are available. Please keep in mind that Lake Hartwell Association and Lake Hartwell Partners for Clean Water are both 501c3 organizations and volunteer hours can be used to satisfy multiple areas of service within the community. Thank you for all the past, present and future support!

For the Sake of the Lake,

Kira Novack
Volunteer Coordinator

adoptashoreline@lakehartwellassociation.org

LAKE HARTWELL ASSOCIATION ANNUAL MEETING 2024

On Wednesday, November 13, the Lake Hartwell Association (LHA) held their annual meeting in Hart County at the Adult Learning Center. This was an abbreviated meeting as it was a make up for the scheduled meeting that was postponed due to the hurricane.

Acting President Terry Jackson Jr spoke to the audience on various topics including membership with focus on Georgia, lake levels, a very successful Splash for Trash held in September with three sites in Georgia, board member changes, an overhaul of LHA's by-laws, and upcoming media changes at LHA just to name a few.

Jackson also answered questions for the audience. Corps of Engineers Natural Resources Program Manager Scott Kelley was in attendance and added excellent information to group questions and concerns.

Kelley discussed some aquatic algae issues as well as hurricane damage left on Corps property. Kelley emphasized the importance of working with Corps rangers before making any shoreline changes, including tree and stump removal from Corps adjacent property.

LHA has been very active in Georgia throughout 2024 with a special Georgia meeting including the Hart County Property Owners Association with over 50 people in attendance and 10 new memberships collected. An orientation meeting took place for new LHA members which included the Corps and the Coast Guard Auxiliary stressing boating safety and available boating courses. LHA also attended the Lavonia boat show and the Hartwell Maritime Market. The newest member of the LHA team spent October on the courthouse lawn as a water skier, an entrant in the Hartwell Scarecrow Bash.

Many thanks are extended to those who attended the meeting. Refreshments were provided by LHA.

Look for more information to be shared soon regarding boat safety and Georgia boating laws.

LHA's 2025 Annual Meeting will be held on March 11 in Anderson as well as Hartwell.



ATTENTION ALL LHA MEMBERS

We recently completed a draft of proposed changes to the Bylaws of Lake Hartwell Association. These updates began with a review of Georgia Code (e.g. required to have a CEO and CFO) and a general review to bring the document from 1990 to 2024 (e.g. allow addition of email and virtual meetings).

To see the proposed changes, go to the link below. Here you will find the original Bylaws and the proposed changes to the Bylaws of LHA.

<https://www.lakehartwellassociation.org/news/lake-documents/>

It would be great to get your feedback. As you review the changes some of these may be obviously why they are being changed and others you may have questions. Please email any questions or comments to lhaofficemail@gmail.com before January 22, 2025. All feedback will be reviewed. Final proposed changes to the Bylaws will be sent to membership 30 days prior to the Annual Meeting in March. We encourage all members to attend the 2025 Annual Membership Meeting on Tuesday, March 11 when the LHA membership will vote on the proposed changes to the Bylaws.

We look forward to hearing from you.

Respectfully,

K. Terry Jackson Jr. for the LHA Board of Directors

SAVE THE DATE

TO JOIN US FOR THE 2025

Lake Hartwell Association Annual Member Meeting

7:00 P.M. on Tuesday, March 11th



Members & Future Members Welcome - For the Sake of the Lake

MORE DETAILS TO COME

**Be sure to mark you calendar for this one, as all current members
will be invited to vote on amendments to the Bylaws of LHA.**

NEW MEMBERS IN LAKE HARTWELL'S CONGRESSIONAL DELEGATION

by Rhea Dignam

When the 119th Congress convenes in Washington, DC on January 3, 2025, Lake Hartwell will be represented by three members of the House of Representatives. On the Georgia side, returning to represent the portion of Lake Hartwell located in Stephens County Georgia and thus part of Georgia's 9th Congressional District, will be Andrew S. Clyde. In the 118th Congress, Congressman Clyde also represented Hart and Franklin Counties. However, in 2023 Georgia's legislature redrew the contours of several Congressional Districts. As a result, effective in January 2025 Hart and Franklin Counties will be in Georgia's 10th Congressional District, which will be represented by returning Congressman Mike Collins. While representing Hart and Franklin counties will be new for Congressman Collins, he is familiar with issues related to lakes administered by the US Army Corps of Engineers, because during the 118th Congress parts of Lakes Russell and Thurmond/Clarks Hill were in his Congressional District. Additionally, Congressman Collins' committee assignments in the 118th Congress included membership on the Subcommittee on Water Resources and Environment of the House Committee on Transportation and Infrastructure. According to its website, the "jurisdiction of the Subcommittee on Water Resources and Environment consists generally of matters relating to water resources development, conservation and management, water pollution control and water infrastructure, and hazardous waste cleanup." Further, "[i]ssues and agencies under the jurisdiction of the [Subcommittee] include: [w]ater resources programs of the Army Corps of Engineers (Corps)."

See <https://transportation.house.gov/subcommittees/subcommittee/?ID=107422>. Congressman Clyde's District Office is in Gainesville; Congressman Collins' District Office is in Monroe.

On the South Carolina side of Lake Hartwell, Anderson, Pickens and Oconee Counties continue to be in South Carolina's 3rd Congressional District. Sheri Biggs, who will be a first term member of Congress, was elected to represent the District. (The incumbent, Jeff Duncan, had represented the District since 2010 but was not a candidate in November 2024.) Ms. Biggs' is a resident of Salem in Oconee County. See <https://www.sheribiggs.com>. As of the writing of this article, the location of Ms. Biggs' District Office was not available.

SILTING AND SILT REMOVAL IN LAKE HARTWELL

by Margarit Gray

As water enters the lake from rivers, streams and creeks, it breaks down the soil into the fine particles we call silt. Silt is also formed when waves erode the bank of the lake. In calm water this silt settles to the bottom of the lake. Large amounts of silt has disadvantages because it can decrease the water level in areas impacted by silt. A certain amount of silt is necessary because it contains nutrients for small fish and other small organisms. Silting is a normal lake process. The issue becomes how much silt is deposited into the lake.

Silting results from the erosion of upland soils that are deposited into the lake bed. This erosion can be decreased by creating a barrier, such as trees and vegetation to prevent soil from washing into the lake during rain events. This is why it is so important not to remove vegetation, including trees from the shoreline. Native trees and native plants can be planted to help with erosion control. Another source of silting is when wave action erodes the shoreline. This can be minimized with rip rap along the shoreline. A permit is needed for any of these erosion control methods.

If a cove or shoreline area around a dock becomes too shallow from silting it may become necessary to dredge the area. In Lake Hartwell only "dry dredge" is allowed. A separate permit is needed for this and can only be done if the water level is 8 to 10 feet below normal pool and the lake bed is dry. You can only remove silted material to the original water depth, which was established when the lake was originally impounded. The area to be dredged has to be coordinated with a ranger. More details about dredging are found in the Lake Hartwell Shoreline Management Plan, which includes regulations for maintaining natural habitats and erosion control. One of the down sides of dredging is that it can destroy fish breeding grounds.

WHO IS WATER SKIING ON THE LAWN?

By Bill Fogerty

“There is a water skier on our lawn! Look outside!” yelled one of the Hartwell courthouse employees.

The Lake Hartwell Association proudly presents our LHA scarecrow dressed as a skier complete with vintage water skis and a power boat. He was recently showcased in the 2024 Hartwell scarecrow contest.

The scarecrow craze first began in Hartwell 14 years ago. Over that time period, many downtown businesses have entered their own scarecrows for the fall event filling the square with new colorful, artistic occupants. With scarecrows everywhere in all types of costumes, folks from all over North Georgia came to visit the creative group of contest entrants.

A panel of judges awarded prizes, including \$300, \$200, and \$100 for 1st, 2nd, and 3rd place. They also awarded \$100 for the People’s Choice Award. There were 27 entrants with 250 votes based on the official Hartwell Sun ballots. Winners were announced at the mayor’s Monster Mash.

Winners included Hart County Botanical Garden—1st, Southern Hart Brewing Company—2nd. Hart Care Center—3rd, and finally Skelton Morris. Congratulations to all!



INVASIVE AQUATIC PLANTS AND LAKE HARTWELL

By Eileen Mendyka, Master Gardener

We've all seen kudzu vines draping over trees along SC roads... not only does this look creepy, but this invasive plant is killing our native flora.

Kudzu was imported from Japan and became popular in the southern United States, where it was planted for both decorative and soil stabilizing uses. Its explosive growth earned it the name *THE VINE THAT ATE THE SOUTH*. It is a perennial trailing vine that can grow up to one foot a day and to a length of nearly 100 feet. It easily overtakes other plants in its path and kills them by choking out sunlight. Once established it is nearly impossible to eradicate.

Why aquatic plants?

Aquatic plants are essential parts of lakes and contribute much to the lake's health and productivity. They provide many ecosystem services that not only benefit humans, but also native fish, waterfowl, and invertebrates. Aquatic plants turn nutrients from water and soil into plant matter eaten by all types of herbivores, which are then consumed by larger fish in the lake. Plants are the foundation of aquatic food webs.

The benefits of these plants are:

- They produce oxygen through photosynthesis, which allows maximum fish health.
- They take up excess nutrients, particularly nitrogen and phosphorus wastes from the fish.
- They provide structure and cover for fish, insects and waterfowl.

These are the aquatic plants that currently grow in Hartwell Lake:

Water primrose	Southern watergrass	Pondweed
Parrotfeather	Water pennywort	Arrowheads
American lotus, lotus lily	Waterwillow	Cattail
Alligatorweed	Southern naiad	Bladderwort
Fanwort	Slender/spiny leaf naiads	Pickerel weed
Coontail, hornwort	Fragrant waterlily	Marsh hibiscus
Chara, musk grass	Water paspalum	Maidencane

When plants become invasive

Some aquatic plants can become over abundant and require control. They disrupt natural ecosystems, wildlife food sources and habitats, and water flow. They can also decrease water availability to users, block transportation routes, choke industrial and public water supply pipelines, degrade water quality, and decrease property values. Management of aquatic vegetation is necessary to maintain the health of the lake.

An example of a nuisance aquatic plant in our area is *Hydrilla verticillata*. *Hydrilla* is native to Africa and was introduced to the US through the aquarium trade. It is considered a noxious aquatic weed in most of the United States. This is due to the plant's fast growth rate and ability to spread rapidly, often reaching nuisance levels that can require costly management. *Hydrilla* forms dense mats on the water surface, which limits shoreline uses by swimmers, bank fishermen, and boaters.

In late 1995, 55 acres of hydrilla were located in J. Strom Thurmond Lake. In spite of aggressive aquatic herbicide treatments at Thurmond Lake, the known distribution of hydrilla has increased to approximately 4,985 acres. From 2017-2019 approximately 49,000 grass carp were stocked in J. Strom Thurmond Lake to manage *Hydrilla* and the issue of Bald

eagle mortality resulting from Avian vacuolar myelinopathy (AVM). Hydrilla has also been found in Lake Keowee. In Lake Hartwell, it has recently been found by the Corps of Engineers in the upper Tugaloo area, near Stephens County Recreation Area. It is a small area of growth, and is generally visible only when lake levels are low, but the Corps is monitoring it to check its growth.

Why manage it?

Hydrilla could potentially migrate to all areas of suitable habitat within Lakes Hartwell, Thurmond and Russell.

What can you do?

Help prevent the spread of aquatic plants! Hydrilla and other aquatic plants are often transported unintentionally when boats are towed from one lake to another. Boaters should make sure their boat, trailer, live well, and all fishing and recreational items are free of aquatic plants before leaving the launch area of any lake. Rinse your boat thoroughly when moving from lake to lake. Place any plants you remove into a garbage container. Do NOT put them back into the lake! Never intentionally plant hydrilla or other nuisance aquatic plants in any waters. By doing these simple things, you can help protect the lakes you use and the aquatic resources within them.

Learn more about nuisance aquatic plants! There are numerous other aquatic plants that have the potential to negatively impact our lakes if they are accidentally introduced. These plants include water hyacinth, eurasian watermilfoil, water lettuce, and giant salvinia.

To identify potentially nuisance plants, you can use these two helpful resources:

Aquaplant is an online diagnostic tool developed by Texan A&M Extension; and Aquatic Plants is an app for your phone developed by NC State University. Report any suspicious plants to SCDNR and the Corps of Engineers.

You can also submit a plant sample to the Clemson Plant & Pest Diagnostic Clinic. Information on submitting samples is available on their websites www.clemson.edu and hgic.clemson.edu, then search for invasive aquatic plants.

Lake Hartwell Partners for Clean Water recently developed a Lake Monitoring Program to help people get involved with the health of our lake. An upcoming LHA newsletter will have information on getting a Lake Monitoring certification.



Hydrilla (*Hydrilla verticillata*), is one of North America's most invasive species.



Water lettuce (*Pistia stratiotes*) is a free floating plant that grows so thick it can inhibit navigation.



Giant Salvinia (*Salvinia molesta*) is a floating fern from Brazil that blocks out sunlight and decreases the oxygen content for fish and other aquatic animals.



A **Water Hyacinth** (*Eichhornia crassipes*) is growing with a colony of **Water Lettuce** (*Pistia Stratiotes*) in a pond. Millions of dollars are spent on water hyacinth eradication.



Eurasian watermilfoil (*Myriophyllum spicatum*) forms thick mats in shallow areas of a lake.

“Catch” Someone...

DOING SOMETHING GOOD FOR OUR LAKE



Take a photo & send it to

LHANews@lakehartwellassociation.org

with your name, the name of the person(s) in the photo, the date, & what “good” thing you saw. This is a great way to share best practices and provide recognition.



Here is a very special helper from our Splash the Trash event. Introducing Lola, granddaughter of Greg Distler, who was our youngest volunteer.

Thank you for helping us, Lola!

MEMBERSHIP PRICE INCREASE NOTICE

Dear Valued Member,

Please note there will be an increase in the base membership level to reflect increased costs due to inflation and additional projects. The base annual membership level has increased to \$50. Our last membership fee increase was ten years ago, in January of 2015.

————— The new LHA membership donor levels are: —————

Personal Membership Levels

Skipper \$50
Captain \$100
Admiral \$200

Community & Business Membership Levels

Bronze \$100
Silver \$250
Gold \$500

*LHA appreciates your support of its mission!
Thank you, Lake Hartwell Association Board of Directors*

HAVE QUESTIONS?

Send your lake related questions to **LHANews@lakehartwellassociation.org**, and we'll publish your question as well as our answer in our next newsletter.

ADVERTISE YOUR BUSINESS

IN THE LHA NEWSLETTER



Exclusive offer only to business members!

Business Name: _____

Contact Name: _____

Phone Number: _____

Ad Size: ____ Business Card ____ ¼ page ____ ½ page

Number of Issues: _____ 2 issues _____ 4 issues

Return by mail with payment to:

LHA, PO Box 2122, Anderson, SC 29622

For Questions & where to send your file:

mail@lakehartwellassociation.org

AD PRICING

Business Card

2 x 3.5

2 issues for \$200

Quarter Page

3.25 x 4.5

2 issues for \$400

Half Page

6.5 x 4.5

2 issues for \$600

PREFERRED FILE FORMAT:

HIGH-RESOLUTION PDF

Alternate File Formats
Accepted: Illustrator
(outlined) .AI or .EPS
Image resolution: 300
dpi at actual size

THANK YOU LHA COMMUNITY & BUSINESS MEMBERS!

We support the businesses that support LHA
"For the sake of the lake!"

GOLD SPONSORS

Allen Tate Realtors - Anderson
BuyHartwellLake, LLC
Custom Dock Systems Inc.
Fowler Electric
J&S Shoreline, LLC
Old Stone Tractor Company
SSC/Floatair BoatLifts, Inc.

SILVER SPONSORS

Anderson Regional Joint Water System
Athens Marine Inc.
Big Water Marina
Chapman Design Group, Inc.
Chickasaw Point Property Owners
Hartwell Marina (Go Outdoors Hartwell)
Katie Tillman – Realtor / Friends - Farm & Catering
Lakeside Chiropractic, LLC
Strickland Marine Center, Inc.
Lake Hartwell Guide
Western Carolina Sailing Club

BRONZE SPONSORS

Advantage Services of the Upstate
Bill Brissey Real Estate
Clemson Marina & Campground LLC
Coldwell Banker Fort Realty
Collins Docks, Inc.
Dock Depot & Marine Supply
Harbor Oasis Marketplace
IPC Supply, Inc.
Jill Chapman Real Estate
Kroeger Marine Construction
Marine Specialties
Mathew Nasrallah, Attorney at Law
Mike Sanders Boat Storage
New Harbor Light Marina
Parker Quigley Properties
Pintail Point Property Owners Association
Portman Marina
Prime Lake Services
Seminole Point Property Owner's Association
Swaney's Point Association
Teakwood Plantation HOA

LHA MEMBERSHIP: Welcome Aboard & Thank You!

We are grateful to all our members for your support of LHA's efforts to protect the beauty and value of our beautiful lake and watershed. Please join us in welcoming the following members who have joined since our last newsletter:

NEW FAMILY MEMBERSHIPS

John Atkinson, Shuler Baron, Lisa Cain, Mitchell Cameron,
Vernon Castonguay, Phil Crider, Treva & Donnie Davis, Ryan Glenn,
Luther Hill, David Holliday, Mimi & Gene Jones, Randy Kazmer,
Kyle Langill, Matthew Lohman, Tonya & Andy McLachlan,
Anthony & Dayna Monaghan, Deb & Pat Nikkila, Kathleen Olson,
Cheri Orozco, Davis & Denise Peacock, Alicia Pearce,
Darrell & Beth Sandlin, Steven Westr

NEW CAPTAIN'S CLUB MEMBERSHIPS

Denise Ellison, William Tindol, Linda & Ed White

NEW ADMIRAL'S CLUB MEMBERSHIPS

Erin Dawson

NEW COMMODORE'S CLUB MEMBERSHIP

Gregory Reynolds

NEW COMMUNITY & BUSINESS MEMBER

Lake Hartwell Guide - Hartwell, GA

**Special Thanks to the following LHA members for
their additional generous donations.**

CAPTAIN'S CLUB

J. William Butler, Kirk & Margarette Carter, Rick & Joyce Dawson, Nolan
& Cheryl Deal, Emma Deavours, Matthew Denton, Shawn Devine, Laura
Dillon, Gregory & Nanci Distler, Doris Farrar Family, Raymond Fedele,
Andrea Garrard, Willis & Paula Gray, Wallace Gross, Michael Haubert,
Lloyd Herrington, Terry & Ellen Jackson Jr., Steve & Kirstine Kester,
Wayne Martin, Ed & Angela Mathis, Bill & Mary Ann Nicholson, Bill
& Lynne Noethling, Claude & Kira Novack, J Michael Popovich, Lee &
Beth Propp, Natalie & Garth Russo, Thomas Sharkey, Lynn Smith, Daniel
Stokes, Jim & Kathy Thompson, Garland & Emily Woodward

ADMIRAL'S CLUB

Catherine Adams, Jim & Sandy Austin, Warren Benson, Marsha Otte,
Alan & Jacque Culpepper, Kyle & Tammy Els, Charles & Kristine Fritz,
Robert & Cherie George, Mike & Ann Haynie, James Holcomb, Frank &
Pam Lamson, Scribner, Gail & Richard Lenahan, Dennis (Cal) & Melissa
Looney, Karen Loyd, Reba Martin, Rob Svedberg & Maria Mollise, Cory
Schilling, Dail Skelton, John Tribble & Tony Strickland, John & Kimberly
Tucker, Jeter & Carol Yates

COMMODORE'S CLUB

Bryan & Susan Boyd, Brodie & Elaine Brigman, Robert & Valerie Clak,
Angela Kemp & Chris Honan, Andy & Pam Skelton, Cira Traber

COMING SOON!

**LHA WILL HAVE A
BRAND NEW WEBSITE
IN 2025**

BE ON THE LOOKOUT!

ELECTRONIC NOTICES COMING IN 2025

Dear Valued Member,

Effective, January 2025, LHA will be switching from paper renewal notices to electronic notices. We hope you will like the new process. Please bear with us as we work through this new process. Renewal notices will continue to go out on a quarterly basis. You will receive a renewal notice based on the quarter you originally joined LHA. This change is part of our efforts to reduce spending on printing and postage.

Thank you for your support!

Sincerely, Lake Hartwell Association Board of Directors

CONTACT US

Contact us at

lhaneews@lakehartwellassociation.org

if you are interested in having a speaker
for an upcoming special event or meeting.

GROWING
your BUSINESS
SUPPORTING
our community

Proudly serving our hometown for over 40 years!

Thanks for your support!



1005 N. Fant Street | Anderson, SC 29621
864.225.1471 | thinkpip.com



**Have a wonderful, safe
winter on Lake Hartwell!**



LAKE HARTWELL ASSOCIATION, INC

for the sake of the lake

PO Box 2122 • Anderson, SC 29622

NEW MEMBERSHIP LEVELS

Winter 2025

Personal Annual Memberships

Skipper \$50

Captain \$100

Admiral \$200

Community and Business Annual Memberships

Bronze \$100

All basic benefits
PLUS company name in newsletter
and on LHA website

Silver \$250

All basic benefits PLUS
company name in newsletter and name,
logo, & link on website

Gold \$500

All basic benefits PLUS...
company name, logo, & link on website

MEMBERSHIP APPLICATION

Thank you for your support!

Please return this portion with your payment

Winter 2025

Personal Memberships:

☐ Skipper \$50

☐ Captain \$100

☐ Admiral \$200

Business Memberships:

☐ Bronze \$100

☐ Silver \$250

☐ Gold \$500

Name (s): _____

Address: _____

City: _____ State: _____ Zip: _____

Telephone#: _____ Email: _____

Mail your check or money order to: Lake Hartwell Association, P.O. Box 2122, Anderson, SC 29622.
If you prefer, you may visit www.lakehartwellassociation.org and make a secure payment online.